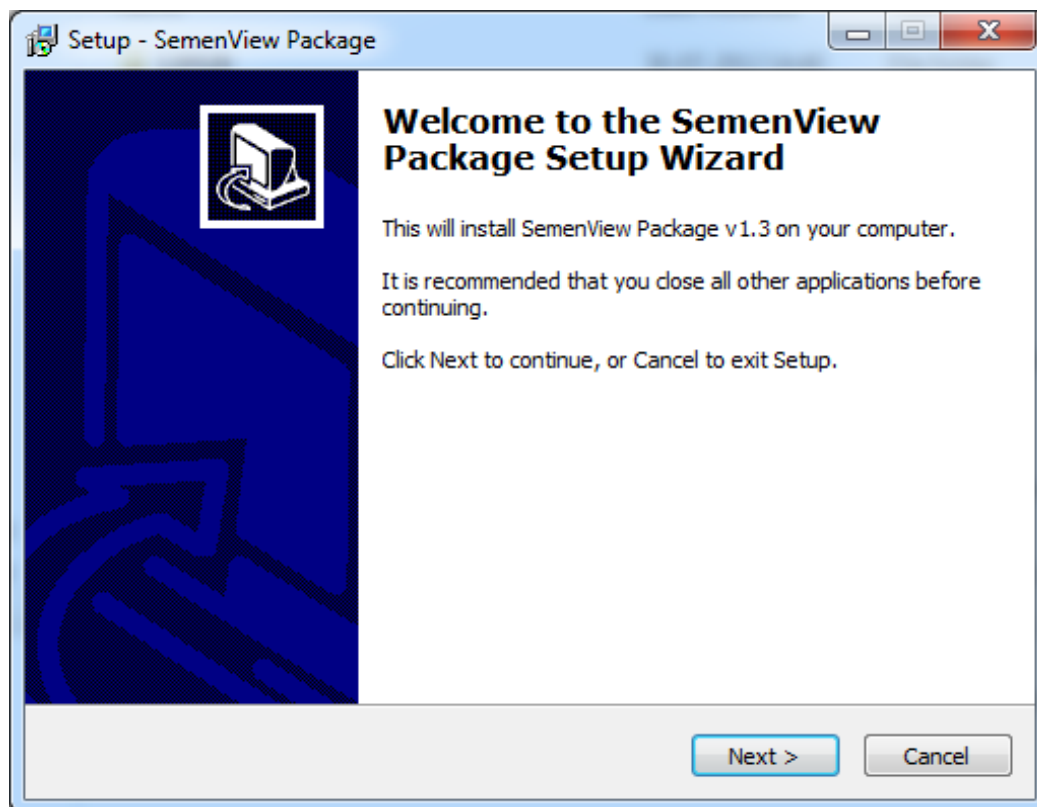


Installation of SemenView on 64-bit OS



Technology that counts



1 Installation

The installation¹ procedures below describe the installation of the SemenView software and the USB driver on computers running Windows 7.

The communication between the NucleoCounter SP-100 and SemenView is based on the USB 1.1 protocol, thus the computer must be equipped with an USB 1.1 compatible port.

1.1 Installation of the SemenView Package ver. 1.3 - Windows 7²

When the computer has been turned on and is finished with the start-up process, insert the USB Flash stick. Let the computer install the USB Flash stick and then open the stick.

Activate the application "SemenView Package v1.3 Installer" and allow (hit Yes) the Installer program to make changes to the computer (see Figure 1 User Account Control)³

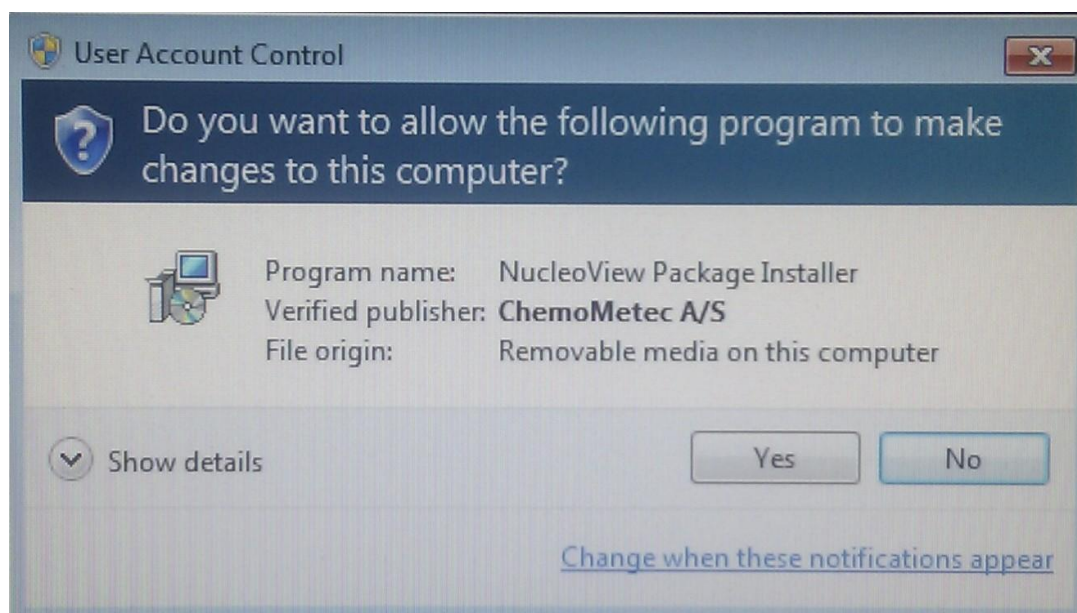


Figure 1 User Account Control

The Installer will welcome you and you can now continue the installation in a very controlled manor.

¹ This installation is called " SemenView Package ver. 1.3", since it contains a new driver for 64-bit OS also. However the actual SemenView program is still ver. 1.2. For other WIN-OS please contact your local IT-administrator.

² This description applies to Windows 7 only.

³ Shown for NucleoView, but for SemenView the box is similar.

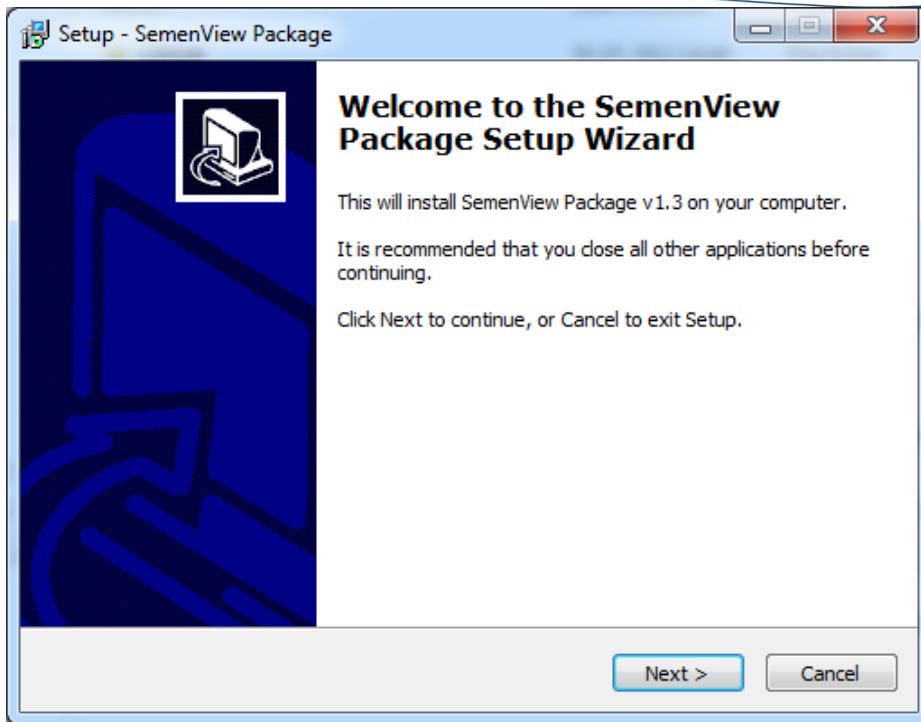


Figure 2 Installer Setup - Welcome

Hit "Next"

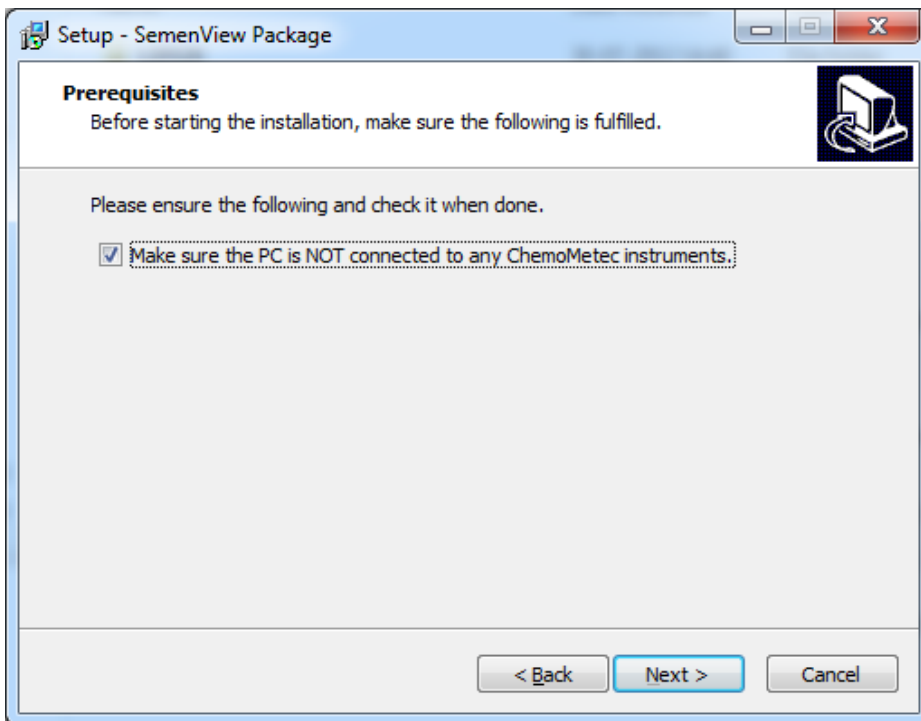


Figure 3 Installer Setup - Prerequisites

Check the check box in Figure 3 Installer Setup - Prerequisites and hit "Next".

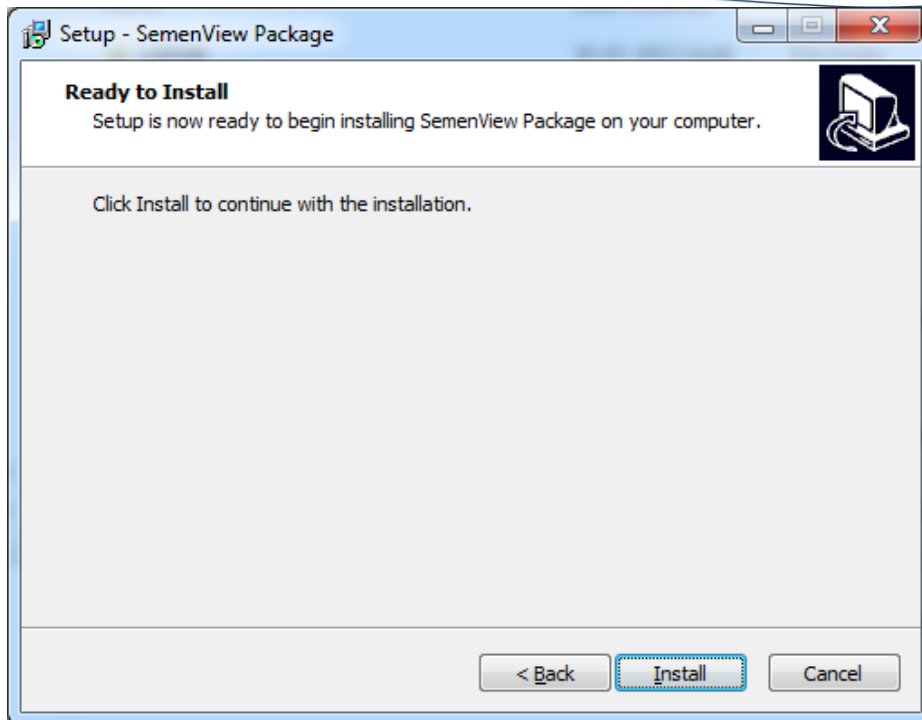


Figure 4 Installer Setup – Ready to Install

Hit "Install".

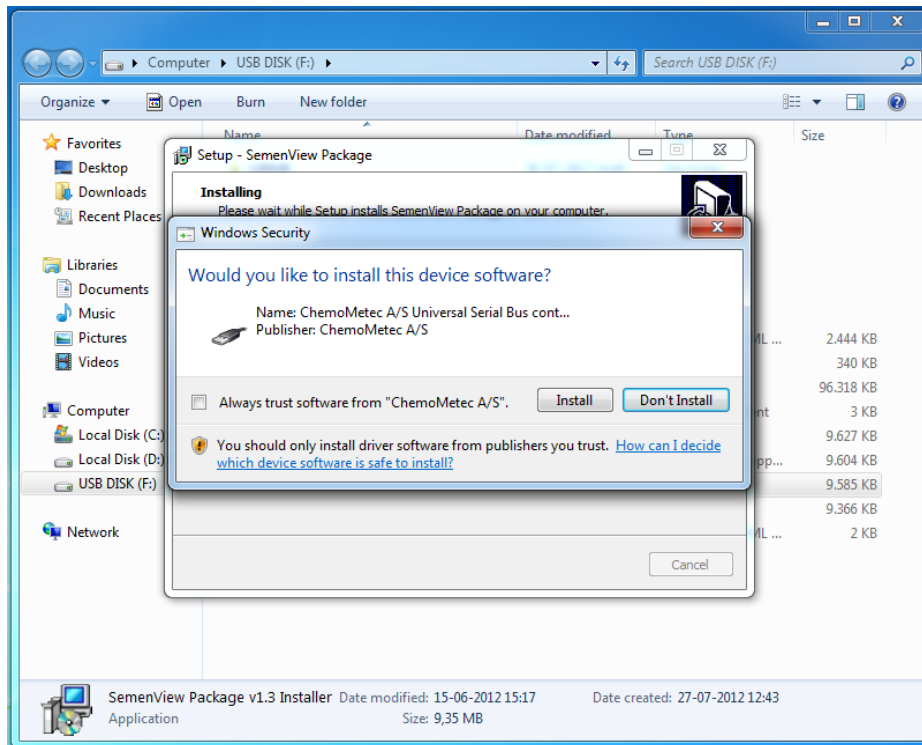


Figure 5 Installer Setup – Installing and Windows Security

After the actual Installation is started you will be prompted to accept the installation of the device software for the USB driver. Hit "Install"

In the background the installation continues and when this is over the following dialogue appears. Then hit "Finish".

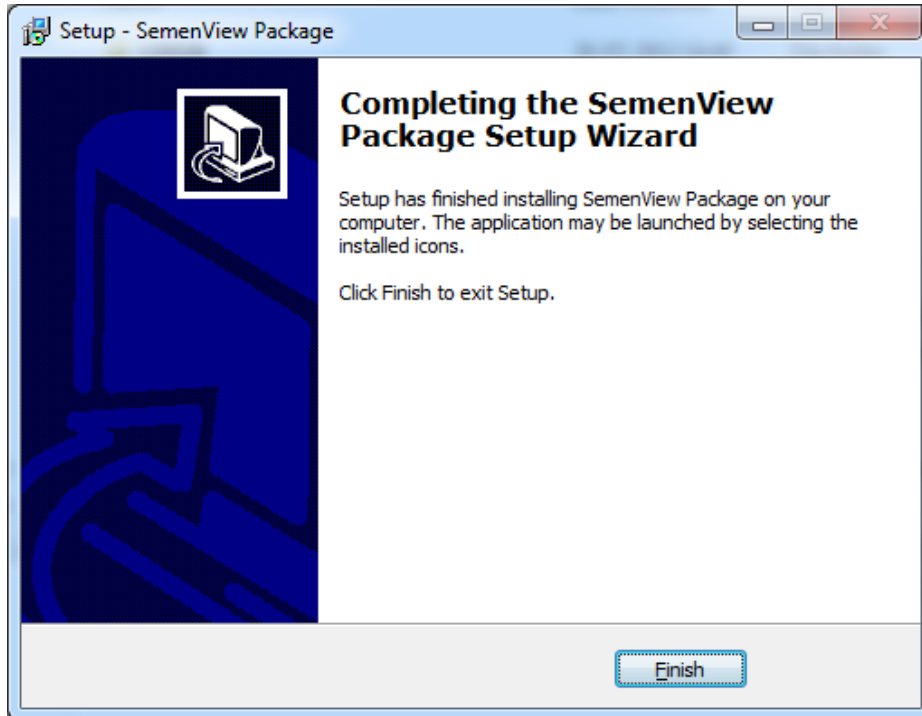
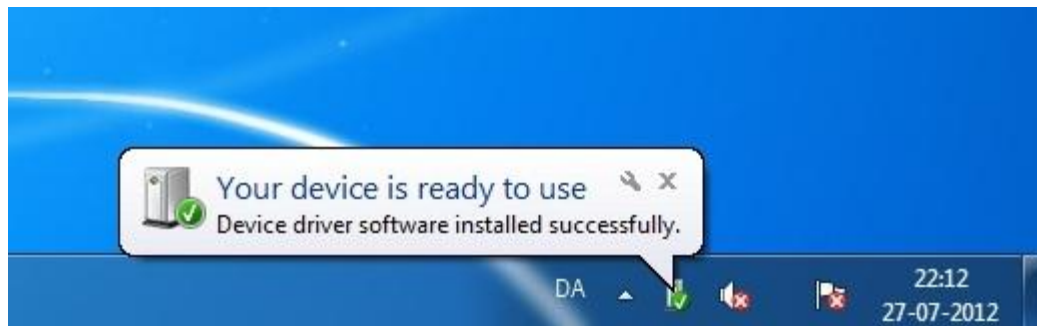


Figure 6 Installer Setup – Completed

The first time a NucleoCounter SP-100 is turned on while connected to the computer, the computer will identify the NucleoCounter SP-100 as new hardware and install the drivers for it. So the screen will show the following message.



The information contained herein is to the best of our knowledge accurate and complete. However cell species and cell environments may vary in property. Therefore systematic and/or random deviation between estimates obtained by the NucleoCounter SP-100™ and other cell counting methods may occur. As such, nothing contained or stated herein including results obtained from use of the NucleoCounter SP-100™ or SP1-Cassette™ shall be construed to imply any warranty or guarantee. ChemoMetec A/S and affiliated companies shall not be held liable for damages and customers shall indemnify ChemoMetec A/S and affiliated companies against liability flowing from use of potentially inaccurate data generated by the NucleoCounter SP-100™. It is recommended that all results obtained with the NucleoCounter SP-100™ are validated against appropriate reference methods and/or traditional laboratory methods at regular intervals.